

MLS #: L15963A List Price: \$113,850

0 Highway 87 ELBA, AL 36323



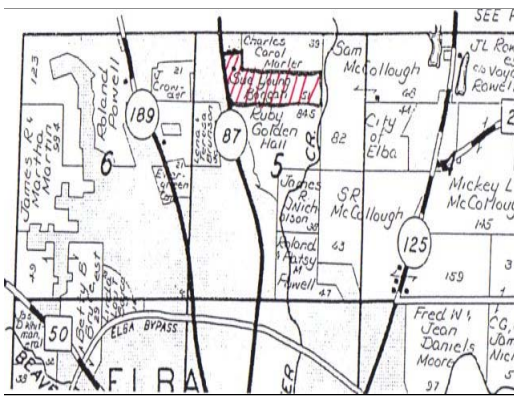
TYPE PROPERTY: Vacant Land, Farm/Ranch,
Residential Single Family
TOPOGRAPHY: Sloping, Stream/Creek
ACREAGE RANGE: 25-50 Acres
APX TTL ACREAGE +/-: 46
PRICE PER ACRE: \$2,475.00

COUNTY ROAD:
AREA: Other
SUBDIVISION:
ELEMENTARY SCHOOL: Elba
MIDDLE SCHOOL: Elba
HIGH SCHOOL: Elba

LEGAL:**LOT SIZE:****RESTRICTIONS:****WOODED ACRES:** 0**ROAD FRONTAGE:** yes**TAXES:****CLEARED ACRES:** 25**ACCESS ROADS:** Hwy 87**BEST USE:** Residential, Investment, Horse Farm, Undeveloped Land & Water Access, Developing, Commercial**BUILDINGS ON PROPERTY:** None**UTILITIES:** Electricity, Cable TV, Single Phase Power, Telephone Line**SALE OPTIONS:** Will Not Divide**WATER/SEWER:** Public Water, Spring**CONVEYANCES:** Fee Simple**MISCELLANEOUS:** Street Paved, State Maintained Road, Natural Land**ACCESSIBLE TRANSPORTATION:****REMARKS:** Great place to build a house or mini farm in the city limits of Elba. Cut over land**DIRECTIONS:** From Troy, take Hwy 87 to Elba, property is about 2 miles North of downtown Elba.**AGENT REMARKS:****OWNER NAME:** Brunson**LISTING CO %:****SELLING CO %:** 5**POSSESSION:** At Closing**DOCUMENTS ON FILE:** Tax Map**SHOWING INST:** Call LA for Appointment, Call LO for Appointment, Sign on Property**ORIGINAL LIST PRICE:** \$113,850**DISPLAY ON INTERNET:** Yes**DISPLAY ADDRESS:** Yes**Office Name:** DAVID ADAMS REALTY, LLC (#:12)**Listing Agent:** Tim Brady (#:12)**Main:** (334) 566-3000**Contact #:** (334) 566-3000**Fax:** (334) 566-5039**Agent Email:** tbrady@troycable.net

© 2009 Systems Engineering, Inc. - All Rights Reserved
Information Herein Deemed Reliable but Not Guaranteed

L15963A



Plat Map



