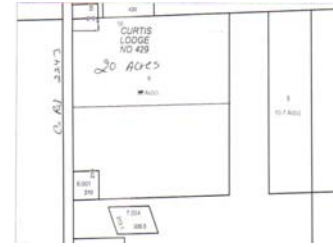


MLS #: L15552A List Price: \$79,000

0 County Road 2243 GOSHEN, AL 36035



Property Features

COUNTY ROAD: 2243	ROAD FRONTAGE: 575 ft
AREA: Goshen	ACCESS ROADS:
SUBDIVISION:	ACCESSIBLE TRANSPORTATION: Other-See Remarks
ELEMENTARY SCHOOL: Goshen	BEST USE: Residential, Investment, Farming, Vegetable/Truck
MIDDLE SCHOOL: Goshen	Farm, Beef Cattle, Horse Farm, Developing
HIGH SCHOOL: Goshen	UTILITIES: Electricity, Single Phase Power
TYPE PROPERTY: Vacant Land, Undeveloped, Farm/Ranch	WATER/SEWER: Public Water
TOPOGRAPHY: Sloping	BUILDINGS ON PROPERTY: None
APX TTL ACREAGE +/-: 20	SALE OPTIONS: Will Divide, Will Sell
WOODED ACRES: 4	CONVEYANCES: Fee Simple
CLEARED ACRES: 16	MISCELLANEOUS: Street Paved, Pasture Land
REMARKS: 20 +/- acres of pasture land that would be great for horses or a mini farm.	

© 2009 Systems Engineering, Inc. - All Rights Reserved
Information Herein Deemed Reliable but Not Guaranteed